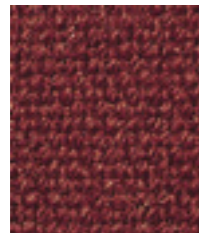
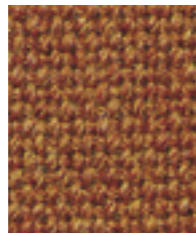


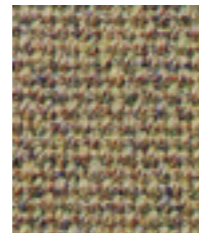
Main Line Plus



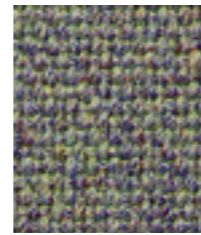
Terracotta IF046



Marmalade IF142



Brindle IF056



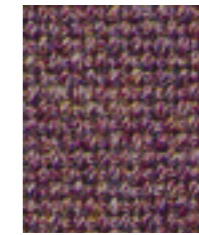
Prism IF057



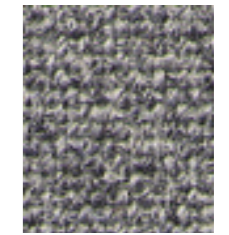
Wedgwood IF027



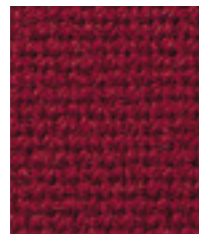
Bluenote IF149



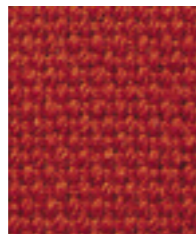
Tulip IF237



Lead IF058



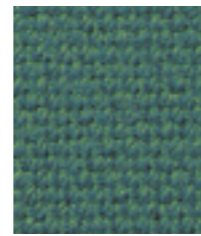
Crimson IF116



Celtic IF120



Mermaid IF231



Aquamarine IF141



Corinth IF089



Cressida IF112



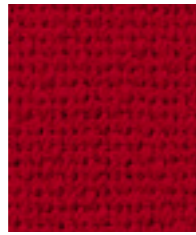
Dewberry IF148



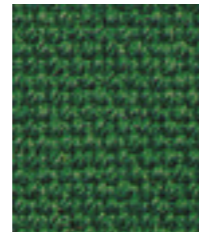
Carbon IF252



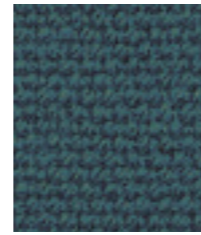
Matador IF272



Red IF011



Juniper IF084



Trident IF135



Clipper IF111



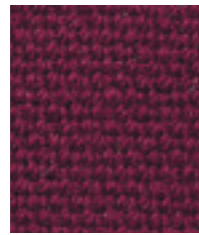
Ink IF129



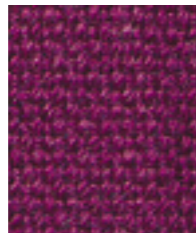
Penstemon IF147



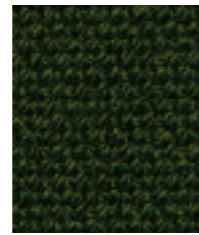
Girder IF276



Claret IF033



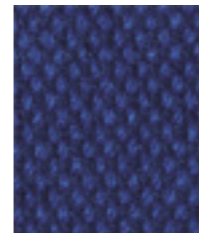
Morum IF128



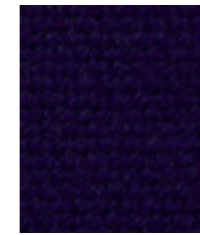
Forest IF094



Mahonia IF114



Triumph IF275



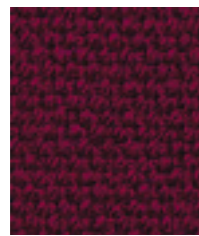
Royal IF020



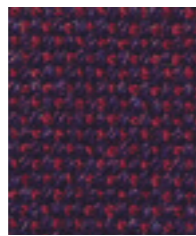
Prudence IF250



Charcoal IF000



Ruby IF101



Wine IF019



Teal IF240



Twilight IF075



Tuscany IF241



Fjord IF083



Bellis IF113



Black IF059

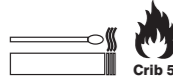
www.camirafabrics.com/samples

To order samples, visit our on-line sample service.

www.camirafabrics.com/samples

To order samples, visit our on-line sample service.

Main Line Plus



UK

Composition	67% Virgin Wool, 20% Flame Retardant Viscose, 13% Viscose
Width	130cm minimum
Weight	425g/m ² ±5% (550g/lin.m. ±5%)
*Abrasion Resistance	5 year guarantee / 75,000 Martindale cycles (full details available)
Flammability	BS EN 1021 - 1 :2006 (cigarette), BS EN 1021 - 2:2006 (match), BS 7176 :2007 Low Hazard, BS 5852 :2006 Section 4 Ignition Source 5, BS 7176 :2007 Medium Hazard <i>Note: Flammability performance is dependent on foam used.</i>
*Light Fastness	5 (ISO 105 - B02:1999)
*Fastness to Rubbing	Wet: 4 Dry: 4 (ISO 105 - X12:2002)
Maintenance	Vacuum regularly. Professionally dry clean or wipe clean with a damp cloth.
Colour Matching	Batch to batch variations in shade may occur within commercial tolerances.

*Tested in accordance with BS 2543:1995/2004. Further information available on request. Please note that ultimate seam performance is dependent on seam construction, and needle and thread type. We recommend that appropriate sewing advice be taken.
Note: We reserve the right to alter technical specifications without notice. The Unregistered Design Rights and the Copyright in all designs are the exclusive property of Camira Fabrics Limited.

F

Composition	67% Laine Vierge, 20% Viscose retardateur de flamme, 13% Viscose
Largeur	130cm minimum
Poids	425g/m ² ±5% (550g/m.l. ±5%)
*Résistance à l'abrasion	75,000 Martindale tours / Garantie de durabilité de 5 ans (renseignements complémentaires disponibles)
Flammabilité	BS EN 1021 - 1:2006 (cigarette), BS EN 1021 - 2:2006 (allumette), BS 7176 :2007 Low Hazard, BS 5852 :2006 Section 4 Ignition Source 5, BS 7176 :2007 Medium Hazard <i>Note: Réaction au feu dépend de la mousse utilisée.</i>
*Solidité à la lumière	5 (ISO 105 - B02:1999)
*Solidité au Frottement	Mouillé: 4 Sec: 4 (ISO 105 - X12:2002)
Nettoyage	Aspirer régulièrement. Nettoyage à sec professionnel. Autrement, essuyer avec une étoffe humide.
Standardisation des coloris	Variations de coloris d'un bain à un autre peuvent se manifester.

*Testé selon la norme BS 2543:1995/2004. De plus amples informations sont disponibles sur demande. Veuillez noter que le glissement de la couture sous tension dépend de la structure de la couture, de l'aiguille et du fil. Nous recommandons de prendre conseil au près d'un professionnel.
Veuillez noter que nous réservons le droit de modifier les spécifications techniques sans préavis.
Les droits non-déposés sur les designs ainsi que les droits de copie sont la propriété exclusive de Camira Fabrics Limited.

I

Composizione	67% Lana Vergine, 20% Flame Retardant Viscosa, 13% Viscosa
Altezza	130cm minimo
Peso	425g/m ² ±5% (550g/lin.m. ±5%)
Resistenza all'abrasione	75,000 Cicli Martindale / Garanzia di 5 anni (dettagli disponibili a richiesta)
Resistenza al fuoco	BS EN 1021 - 1:2006 (Sigaretta), BS EN 1021 - 2:2006 (Cerino), BS 7176 :2007 Low Hazard, BS 5852 :2006 Section 4 Ignition Source 5, BS 7176 :2007 Medium Hazard <i>Note: Il grado di resistenza al fuoco dipende dal tipo di schiuma utilizzata</i>
Solidità alla luce	5 (ISO 105 - B02:1999)
Resistenza allo sfregamento	Umido: 4 Secco: 4 (ISO 105 - X12:2002)
Manutenzione	Regolarmente con aspirapolvere. Lavaggio a secco professionale. Strofinare leggermente con panno umido.
Costanza del colore	Sono possibili leggere variazioni.

*Ha superato il test BS 2543:1995/2004. Ulteriori informazioni disponibili su richiesta. La resistenza della cucitura dipende dal tipo di cucitura e dall'ago e dal filo usati. Si suggerisce di seguire istruzioni di un tecnico.
Nota: Ci riserviamo il diritto di modificare le specifiche tecniche senza preavviso.
I diritti su tutti i disegni non ancora registrati e quelli coperti da Copyright sono proprietà esclusiva di Camira Fabrics Limited.



09/12

Main Line Plus



D

Zusammensetzung	67% Rohe Wolle, 20% Schwerentflammbare Viskose, 13% Viskose
Breite	130cm minimum
Gewicht	425g/m ² ±5% (550g/lin.m. ±5%)
*Scheuerfestigkeit	75,000 Martindale Scheuertouren / 5 Jahre Garantie (Details auf Anfrage)
Feuersicherung	EN 1021 - 1:2006 (zigarettest), EN 1021 - 2:2006 (Streichholztest), BS 7176 :2007 Low Hazard, BS 5852 :2006 Section 4 Ignition Source 5, BS 7176 :2007 Medium Hazard <i>Bemerkung: Schwerentflammbarkeit hängt von verwendetem Schaum ab.</i>
*Lichtechtheit	5 (ISO 105 - B02:1999)
*Reibecheithet	Nass: 4 Trocken: 4 (ISO 105 - X12:2002)
Reinigung	Regelmässig absaugen. Professionelle Trockenreinigung. Alternativ dazu mit einem feuchten Tuch abwischen.
Farbabweichungen	Handelsübliche Farbabweichungen vorbehalten

* Würde nach BS 2543:2004 getestet. Weitere Informationen erhalten Sie auf Nachfrage. Eine optimale Nattaureisfestigkeit hängt von der Nahtform, der verwendeten Nadel und des Fadens ab. Wir empfehlen daher Nähveruche durchzuführen.
Anmerkung: Wir behalten uns die Änderungen technischer Spezifikationen vor. Die registrierten und nicht registrierten Urheberrechte an den Dessinierungen sind ausschließliches Eigentum der Camira Fabrics Limited.

DK

Materiale	67% Ren Råuld, 20% Flamnehæmmende Viskose, 13% Viskose
Bredde	130cm minimum
Vægt	425g/m ² ±5% (550g/lin.m. ±5%)
*Slidstyrke	75,000 Martindale slidebevægelser / 5 års garanti (udlørig beskrivelse af garantien kan rekvireres)
Flammesikring	BS EN 1021 - 1:2006 (cigarettest), BS EN 1021 - 2:2006 (taendstiktest), BS 7176 :2007 Low Hazard, BS 5852 :2006 Section 4 Ignition Source 5, BS 7176 :2007 Medium Hazard <i>Bemærk: Flammesikkerheden er afhængig af anvendt skumtype</i>
*Lysægthed	5 (ISO 105 - B02:1999)
*Gnidægthed	Våd: 4 Tor: 4 (ISO 105 - X12:2002)
Rengjøring	Stovsuges regelmæssigt. Kemisk rensning. Alternativt rengøring med en hårdt opvredet klud.
Farvedifferencer	Farvedifferencer indenfor kommercielle tolerancegrænser kan forekomme fra serie til serie.

* Testet i henhold til BS2543:1995/2004. Yderligere information kan fås på forespørgsel. Vær opmærksom på, at optimal smøgindning er afhængig af søm-, nål- og trådtype. Vi anbefaler, at du følger relevante syinstruktioner.
Bemærk: Vi forbeholder os retten til at ændre tekniske specifikationer uden varsel.
De uregistrerede designrettsigheder og ophavsretten til alle designs tilhører ubetinget Camira Fabrics Limited.

ES

Composición	67% Lana Virgen, 20% Viscosa resistente al fuego, 13% Viscosa
Ancho	130cm minimo
Peso	450g/m ² ±5% (550g/lin.m. ±5%)
*Resistencia a la abrasión	75,000 Martindale ciclos / Garantía de uso 5 años (más información disponible bajo consulta)
Inflamabilidad	EN 1021 - 1:2006 (cigarrillo), EN 1021 - 2:2006 (cerilla), BS 7176 :2007 Low Hazard, BS 5852 :2006 Section 4 Ignition Source 5, BS 7176 :2007 Medium Hazard <i>Condiciones ignífugas dependientes del tipo de foam utilizado</i>
*Solidez a la luz	5 (ISO 105 - B02:1999)
*Solidez al rozamiento	Húmedo: 4 Seco: 4 (ISO 105 - X12:2002)
Mantenencia	Limpiar con aspiradora con regularidad. Limpiar en seco, o bien lavar con un paño húmedo.
Colour Matching	Cada tintada puede tener pequeñas variaciones en el tono dentro de las tolerancias comerciales aceptadas.

*Pruebas realizadas según la norma BS 2543:1995/2004. Más información disponible bajo consulta. El deslaminado de costura depende de su construcción así como el tipo de aguja e hilo empleados. Se recomienda que pida consejos apropiados para la costura. Se reserva el derecho de modificar las especificaciones técnicas sin previo aviso. Los derechos sobre dibujos no registrados y los derechos de autor sobre todos los dibujos son propiedad exclusiva de Camira Fabrics Limited.



camira
style with substance

www.camirafabrics.com

UK Head Office: +44 (0)1924 490491, Germany: +49 7031 60 84 30, Scandinavia: +45 32 55 20 01, USA: +1 317 484 0305, Hong Kong: +852 2314 8728